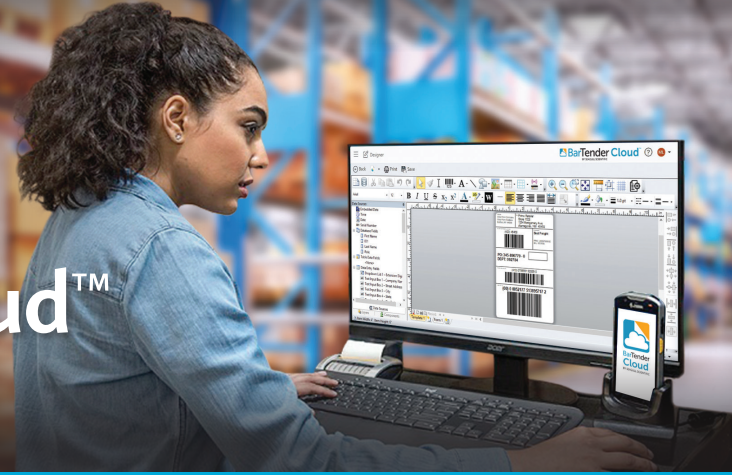


# BarTender Cloud<sup>™</sup>

Simple. Easy. Powerful.



BarTender Cloud<sup>™</sup> is a next generation SaaS labeling solution to create, manage, and print labels from anywhere, anytime without the need for additional IT infrastructure and resources. It's simple and easy to use with the power of BarTender<sup>®</sup>.

## Why labeling is moving to the cloud:

- ▶ Fast deployment
- ▶ Reduced IT maintenance & resource cost
- ▶ Quickly improved labeling
- ▶ Easily scale your label printing operations
- ▶ Pay for only what you print

## Elevate all aspects of your labeling operations



### WAREHOUSE

On-the-spot printing of work-in-progress, pick lists, distribution, receiving, asset tracking and baggage tagging labels



### EXTERNAL SUPPLIERS

Easily set up and control label printing at the supplier or third-party logistics location



### MANUFACTURING

Standardize asset and facility management and traceability labeling across multiple locations



### PRODUCT IDENTIFICATION

On-demand product, shelf and price (food ingredient/allergen) labeling at each store location



### TRANSPORTATION & LOGISTICS

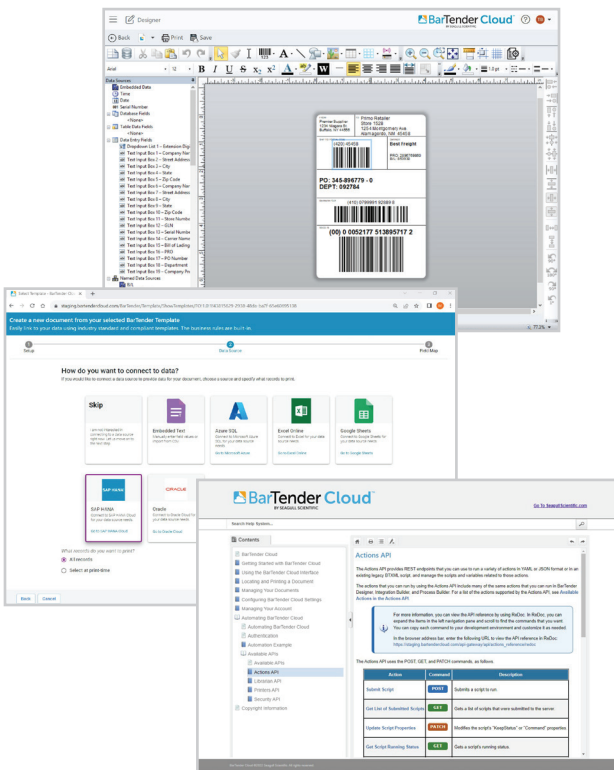
Accurate shipping labels printed right in front of the pallet, parcels or customer



### RETAIL

Standardized retail signage, product identification, or basic logistics labels printing from any of your locations

# A simpler way to print, an easier way to manage



## Print and manage your labels efficiently

- ▶ Optimized, high performance printing from desktop and mobile devices – let us manage printer drivers

## Design labels to your needs

- ▶ Use the only cloud-based label designer to easily and quickly design any label template - no software install required

## Easily connect your data

- ▶ Easily connect your cloud label data for increased accuracy and traceability

## Integrate to any business applications

- ▶ Seamlessly integrate with your ERP, WMS or MES or business application using the BarTender REST API or with pre-built connectors to Dynamics 365 ERP systems.

## Manage your security and systems

- ▶ Secure centralized role-based management. Monitor and track your printing and usage history.

## Access on-demand reliable performance

- ▶ Label printing available whenever and from wherever you need it



## Revolutionize the way you print and manage labels

Unparalleled mobility. Minimized IT burden.  
Centralized tracking and insights.

**Americas:**  
Sales@SeagullScientific.com  
+1 425 641 1408

**EMEA:**  
EMEA\_Sales@SeagullScientific.com  
+34 91 198 4600

**APAC:**  
AsiaSales@SeagullScientific.com  
+886 70 1018 4700

**Japan:**  
JapanSales@SeagullScientific.com  
+81 3 4567 0091