



## PX Series Print Module

Made in Germany

# PX print modules

## Our goals are:

Perfect function, high reliability, easy to handle operation and less maintenance downtime.

The PX print module is designed especially for the fully automatic print and apply operation in the industrial use. It can be integrated in each orientation and used for complex labeling applications.



A solid cast aluminum design is base for the assembly of all components of the printing mechanics. A food safe coating and stainless steel covers make the PX print module perfect with outstanding features. It is bolt compatible with competitive print modules.

## The Universal

The industrial module for precise printing.

1.1	Print module	PX4			PX 4.3*	
	Print resolution dpi	203	300	600	203	300
	Print width up to mm	104	105,6	105,6	104	108,4
	Print speed up to mm/s	300	250	100	250	250

\*4.3 preferably for thermal direct printing.

## The Wide

Focused on Odette and UCC labels.

1.2	Print module	PX6	
	Print resolution dpi	203	300
	Print width up to mm	168	162,6
	Print speed up to mm/s	200	200

## Label peeling direction

Print module PX „L“



left hand version

Print module PX „R“



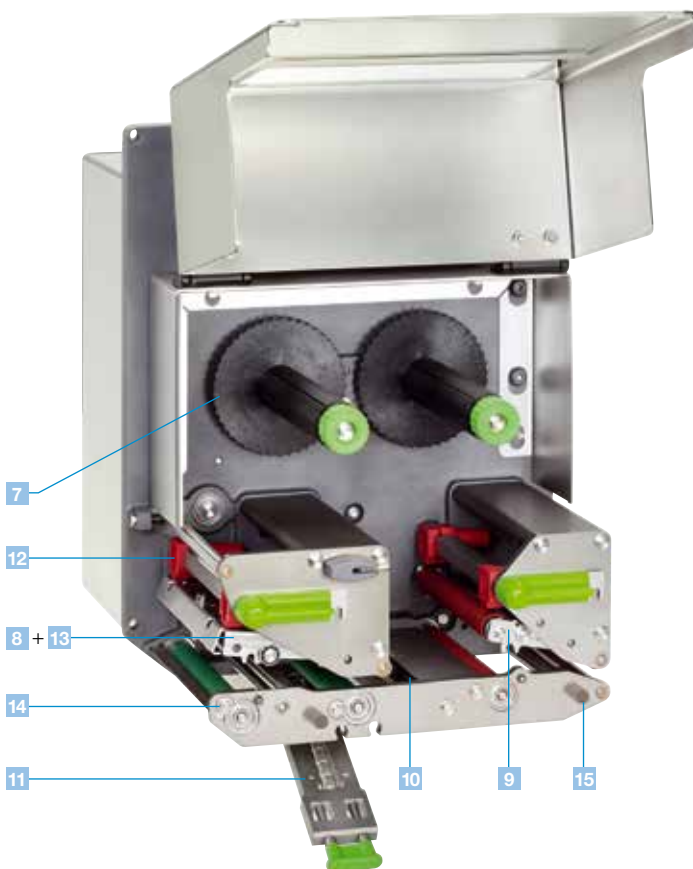
right hand version

All PX print modules are available in right and left hand versions and different resolutions.

# Technical details



- 1 Big graphic display**  
White backlight for optimum readability.
- 2 Navigator pad**  
With illuminated lettering for interactive menu navigation.
- 3 CF memory card**  
Slot for CF memory card for storage of label formats, fonts, texts, graphics, programs or databases.
- 4 USB slot**  
Additional USB slot for service keys, keyboard, scanner or USB memory.
- 5 Power switch**  
Attached to the front for easier handling.
- 6 Solid metal cover**  
Made of die-cast aluminum with antibacterial coating. All casings are made of stainless steel.
- 7 Ribbon rewinder and unwinder**  
The three-part tightening axles enable fast and easy ribbon exchange. Narrow ribbons can be fixed in any position.
- 8 Ribbon saver**  
Used for labels that are only to be partially printed. During label feed the printhead is lifted in the blank area and the ribbon is stopped.



- 9 Back-feed**  
Once a label has been dispensed, the next one can be fed back behind the print line to ensure it can be printed right to the edge and to prevent the liner from leaking adhesive during a longer pause. With very sensitive materials and to avoid ribbon folds, the printhead can be raised during this process.
- 10 Label sensor**  
The gap or reflective sensor ensures the label is positioned precisely and identifies the end of the material – independent of gaps.
- 11 Simple material replacement**  
The label material is inserted edgewise up to the end position. The printhead and pressure roller are locked with locking levers.
- 12 Adjustment of the print layout**  
The pressure can be adjusted easily by moving the plungers.
- 13 Fast printhead exchange**  
The printhead can be exchanged and adjusted easily using the Allen key, which is ready to hand at the machine.
- 14 Removing the print roller**  
The print roller can be easily removed for cleaning or replacement.
- 15 Cover magnet**  
In overhead installation, the cover is held by two magnets.

# Technical data

■ Standard □ Option ○ Authorized distribution by resellers

Print module	PX4			PX4.3 <sup>2)</sup>		PX6	
<b>Printhead</b>							
Printing method	Thermal transfer / Thermal direct						
Print resolution dpi	203	300	600	203	300	203	300
Print speed up to mm / s	300	250	100	250	250	200	200
Print width up to mm	104	105,6	105,6	104	108,4	168	162,6
<b>Material</b>							
Labels, continuous rolls or fan-folded	Paper, cardboard, textiles, plastics such as PET, PE, PP, PI, PVC, PU, Acrylat						
Thickness mm / weight g/m <sup>2</sup>	0,055 - 0,35 / 60 - 160						
Label width <sup>1)</sup> mm	10 - 116					50 - 174	
Width of carrier <sup>1)</sup> mm	25 - 120					50 - 178	
Label height <sup>1)</sup> min. mm without back-feed min. mm when dispensing <sup>1)</sup> max. mm	6	6	6	6	6	12	12
	12	12	12	12	12	25	25
	5000	4000	1000	5000	4000	4000	3000
<b>Ribbon</b>							
Ink	Outside or inside						
Roll diameter up to mm	86						
Core diameter mm	25						
Ribbon length variable up to m	600						
Width <sup>3)</sup> up to mm	114						165
Ribbon saver	□						
<b>Label sensor</b>							
Gap sensor	For leading edge of the label or punching marks and end of material						
Reflective sensor from the bottom	For printing marks						
Distance to locating edge mm	4 - 60						
<b>Electronics</b>							
Processor high speed 32 Bit ColdFire / speed MHz	266						
RAM MB	64						
Memory IFFS MB Flash	8						
Slot for CompactFlash Type I	■						
Slot for wireless LAN card	■						
Real-time clock, printout of date and time	■						
<b>Interfaces</b>							
Centronics bidirectional acc. to IEEE 1284	□						
RS232 C 1,200 to 230,400 Baud / 8 Bit	■						
USB 2.0 high speed slave for PC connection	■						
Ethernet 10 / 100 Base T, LPD, RawIP printing, ftp printing, DHCP, HTTP, FTP, SMTP, SNMP, TIME, Zeroconf, mDNS, SOAP	■						
RS422, RS485 1.200 up to 230.400 Baud / 8 Bit	□						
Wireless Bridge 802.11b	□						
2x USB master for external operation panel, keyboard, scanner or service key, USB flash drive	■						
Digital I/O interface (cab other OEM version)	■						
<b>Operating data</b>							
Power supply	100 - 240 V ~ 50 / 60 Hz, PFC						
Energy consumption	max. 250 W						
Operating temperature / Humidity	Operation:	+ 5 - 40°C / 10 - 85% not condensing					
	Stock:	+ 0 - 60°C / 20 - 80% not condensing					
	Transport:	- 25 - 60°C / 20 - 80% not condensing					
Approvals	CE, FCC class A, CB, CCC, UL						
<b>Operation panel</b>							
Buttons / LED display	Pause, Feed, Cancel, Menu, Enter, 4 x Cursor						
LCD graphic display	Text 4 lines, ca. 20 characters per line						
Width x Height mm	60 x 40						
<b>Settings</b>							
	Digital or analog clock System settings	Print parameters 24 language settings	Interfaces Security	Time Date			
<b>Monitoring</b>							
Stop printing if:	End of ribbon End of label Printhead open						
On the display	Data reception WLAN field intensity Ethernet status	Used memory Temperature of printhead Access to memory card	Clock Date sheet abc Debug	Input buffer Remaining quantity of ribbon			

<sup>1)</sup> Limitations may apply to small labels, thin materials or strong adhesives. Critical materials or applications must be tested and approved.

<sup>2)</sup> Preferred for thermal direct printing.

<sup>3)</sup> The ribbon should be roughly the same width as the label in order to avoid folding.

# Technical data

Test routines	
System diagnosis	When switched on, incl. printhead testing
Short status, status print	Font list, device list, WLAN status, profile of label, test grid, monitor mode, PPP status
Status reports	- Extensive status printout with information about setting, e.g. print length counter, runtime counter - Request of machine status via software command - Detailed status messages on the display, e.g. network error, no link, barcode error, etc..
Fonts	
Font types	5 Bitmap fonts incl. OCR-A, OCR-B and 3 Vector fonts Swiss 721, Swiss 721 Bold and Monospace 821 available internally, loadable TrueType fonts. Thai and Chinese (simplified Chinese) available as options.
Character sets	Windows 1250 up to 1257, DOS 437, 737, 775, 850, 852, 857, 862, 864, 866, 869, EBC DIC 500, ISO 8859-1 to -10 and -13 up to -16, WinOEM 720, UTF-8, Macintosh Roman, DEC MCS, KOI8-R. All West and East European Latin, Cyrillic, Greek, Hebrew and Arabic characters are supported. Thai and Chinese available as options.
Bitmap fonts	Size of width and height 1 – 3 mm Zoom 2-10 Orientation 0°, 90°, 180°, 270°
Vector / TrueType fonts	Size of width and height 0.9 – 128 mm Variable zoom, Orientation 360° in steps of 1°
Font formats	Bold, italic, underlined, outline, negative, vertical, depending on character fonts
Font width	Variable
Graphics	
Graphic elements	Line, arrow, box, circle, ellipse, filled and filled with fading
Grafikformate	PCX, IMG, BMP, TIF, MAC, GIF, PNG

Barcodes		
Linear barcodes	Code 39, Code 93	Interleaved 2 / 5
	Code 39 Full ASCII Code 128 A, B, C EAN 8, 13 EAN / UCC 128 EAN / UPC Appendix 2 EAN / UPC Appendix 5 FIM HIBC	Ident- u. Leitcode der Deutschen Post AG Codabar JAN 8, 13 MSI Plessey Postnet RSS 14 UPC A, E, E0
2D codes	Aztec, Codablock F, Data Matrix, PDF 417, Micro PDF 417, UPS Maxicode, QR-Code, RSS 14 truncated, limited, stacked and stacked omnidirectional, EAN-Datamatrix, GS1 Data Bar	
	All codes variable in height, module width and ratio. Orientation 0°, 90°, 180°, 270°. Optionally with check digit, printed characters and start/stop code, depending on code type.	
Software		
Programming	J-Script direct programming abc-Basic Compiler Database Connector SAP Replace method	■ ■ ■ ■
System diagnosis / administration	Printer monitoring with Intra- and Internet with web interface Network Manager	■ ■
Label software	cablabel® S3 Lite cablabel® S3 Viewer cablabel® S3 Pro	■ ■ □
Windows driver 32 / 64 bit certified for	Windows Vista Server 2008 Windows 7 Server 2008 R2 Windows 8 Server 2012 Windows 8.1 Server 2012 R2 Windows 10 Server 2016	■
Mac driver	OS X printer driver from version 10.6	■
Linux driver	CUPS-based from version 1.2	■
Stand-alone-operation		■

# Interfaces















- 1 RS232C interface
- 2 USB 2.0 slave interface
- 3 Ethernet 10/100 Base T interface with TCP/IP
- 4 Two USB master interfaces for connecting an external operation panel, keyboard, scanner or service key
- 5 Slot for CompactFlash Type I memory card

- 6 Digital I/O interface  
25-pin SUB D socket  
Each of the 24V inputs and outputs are electrically isolated
 

<b>Inputs</b> Label feed Repeat print run Start printing Pause Label dispensed Cancel re-set with memory Cancel re-set without memory	<b>Outputs</b> Warning if end of ribbon Warning if end of label Paper feed ON Print start Error end of ribbon Error end of label Print data available Operating status Label in dispensing position Error printer
--	---
- 7 OEM – digital I/O interface  
15-pin SUB D socket  
Each of the 5V inputs and outputs are electrically isolated
 

<b>Inputs</b> Label feed Repeat print run Start printing Cancel reset without memory	<b>Outputs</b> Warning if end of ribbon Paper feed ON Error end of ribbon Error end of label Print data available Label in dispensing position Error printer
--	---

# Accessories for all models

Extras	
2.1	 <p><b>External panel</b> Connected via USB interface. Both panels provide the same functionality.</p>
2.2	 <p><b>Interface cover</b> Protects the interfaces against humidity and contamination.</p>
2.3	 <p><b>25-pin SUB D interface connector</b> With screw clamps for the cable connection.</p>
2.4	 <p><b>15-pin SUB D interface connector</b> With screw clamps for the cable connection.</p>
2.5	 <p><b>Memory card</b> CompactFlash Type I</p>
2.6	 <p><b>Standard keyboard USB</b> German Version</p>
2.7	 <p><b>Cover magnet</b> By these, in overhead installation the cover is held</p>
Interfaces	
3.1	 <p><b>Centronics interface</b> bidirektional nach IEEE 1284</p>
3.2	 <p><b>Interface RS422/RS485</b> 1.200 up to 230.400 Baud/8 Bit</p>
3.3	 <p><b>Label selection box – I/O box</b> From a higher-level control, like a PLC, up to 16 different labels can be selected from the memory card. The I/O box enables via abc programming to realize easy programming of the PLC with the 4 in- and outputs.</p>
Connecting cables	
4.1	 <p><b>Connecting cable RS232 C</b> 9/9 pin, length 3 m</p>
4.2	 <p><b>Patch cable KAT 5e</b>, 3 m grau</p>



Device functionality and compliance with CE standards are only warranted by using the accessories provided or recommended by cab.

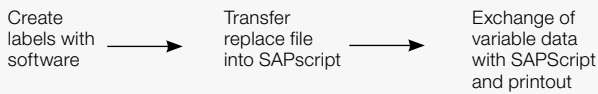
# Software features of the print module

J	<b>Job start</b>
H 100	<b>Speed (100 mm/s)</b>
O R	<b>Orientation rotated by 180°</b>
S I1;0,0,68,70,100	<b>Size label (100x68 mm, gap 2 mm)</b>
T 10, 10,0,5,pt20;sample	<b>Text object/font: Swiss bold, 20 pt</b>
B 10,20,0,EAN-13,SC2,401234512345	<b>Barcode EAN 13, size SC 2</b>
G 8,3.5,0;R:30,9,0,3;0,3	<b>Graphic, box 30x9 mm,</b>
A 1	<b>Line weight 0.3 mm</b>
	<b>Number of labels (in this example 1)</b>

## Direct programming with JScript

Every cab printer can be directly programmed with the JScript programming language. JScript is described in the programming manual. The label software cablabel S3 optimally supports the direct programming, but may also be generated with any text editor.

## SAP® Member Silver Printer Vendor Program



## Replace files and integration in SAP R/3\*)

In cooperation with SAP cab developed the so-called replace method to control cab printers quickly and easily from SAPscript using SAP R/3. Using this method the host computer only sends the JScript variable, respectively changed data to the printer. As a Silver Level partner in SAP's Printer Vendor Program, cab has access to SAP development environments for optimum printer support.

```

abc - Notepad
File Edit Format View Help
<ABC>
label start
input a$
if left$(a$,15)="194300301480070" then
  print "R t2;",mid$(a$,16)
endif
if left$(a$,15)="194300300580172" then
  print "R t3;",mid$(a$,16)
endif
if left$(a$,15)="194300301970073" then
  print "R t1;",mid$(a$,16)
endif
if a$0"q0001" then
  print "A 1"
endif
goto start
  
```

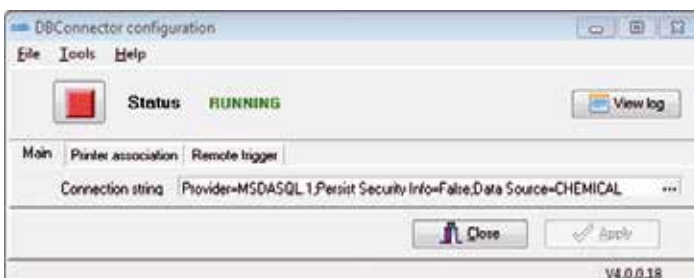
## abc Basic Compiler

As an integrated element of the firmware, the abc Basic Compiler enables the printer to process data via Basic programming before it is sent for print editing. That way, you replace external printer languages or integrate data from other systems, e.g. a scale or PLC.



## Printer monitoring with Intra- and Internet

Using standard programs such as the web browser or ftp clients, the integrated HTTP and ftp servers enable printer monitoring and configuration, firmware updates and memory card administration. Status, warning and error messages are sent to administrators or users via e-mails or SNMP datagrams via SNMP and SMTP clients. A time server is used to synchronize time and date.

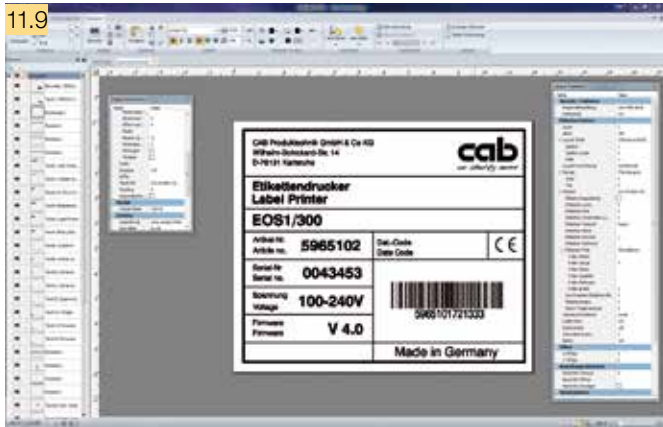


## Database Connector

In stand-alone operation with additional network connection this program allows the printer to access data directly from a central ODBC or OLEDB compatible database and print it on a label. At the same time, data can be written back to the database during the printing process. Integrating the Database Connector in cablabel S3 allows to conveniently establish this database connection when designing a layout.

\*) SAP and all SAP logos are trademarks or registered trademarks of SAP SE in Germany and in several other countries.

# Software tools – label software



cablabel S3 is a label software offering three functions:

- **Designing**
- **Printing**
- **Monitoring**

cablabel S3 does open up the full potential of cab devices in the design of your label. An extensive instruction set is available within the intuitive user interface, e.g. different date formats, mathematic or logic functions.

In doing so, cablabel S3 brings together all cab marking systems. First of all you design the label. You do not have to decide before printing whether you like the label to be dispensed on a label printer, a print and apply system or a laser marking system.

cablabel S3 is available for the following Microsoft\*) operating systems in 32 bit and 64 bit versions:

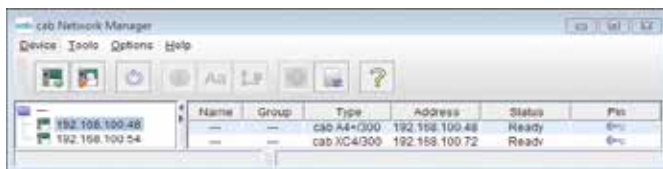
Windows Vista	Windows Server 2008
Windows 7	Windows Server 2008 R2
Windows 8	Windows Server 2012
Windows 8.1	Windows Server 2012 R2
Windows 10	Windows Server 2016

Terminal servers/Citrix are not supported.

Do you like your marking system to print independently of a host system in stand-alone operation? cablabel S3 supports again: After having designed the label, the software supplies with all necessary data stored within the printer to be used in stand-alone operation.

cablabel S3 is of modular design and can be adapted to your requirements step by step: In order to support functions like native programming with JScript, elements like JScript viewer are embedded as plugin. The designer user interface and JScript code are synchronized in real-time. Special functions like Database Connector or barcode testers can be easily integrated.

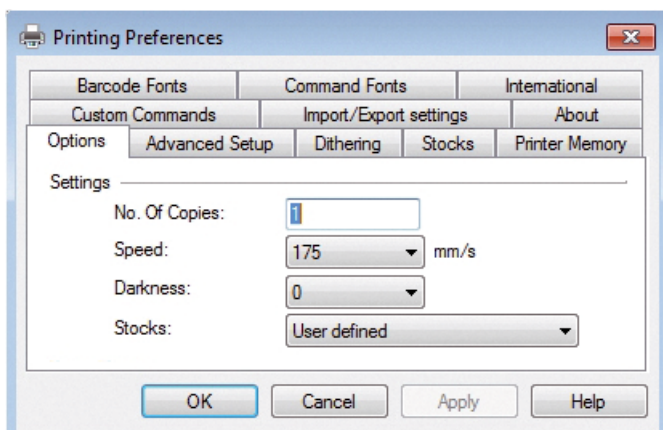
# Software tools – monitoring



## Administration Network Manager

To simultaneously control a number of printers across a network. It supports monitoring, configuration, firmware updates, memory card administration, file synchronization and PIN administration from one place.

# Printer drivers



## WHQL certified Windows printer drivers for

Windows Vista	Windows Server 2008
Windows 7	Windows Server 2008 R2
Windows 8	Windows Server 2012
Windows 8.1	Windows Server 2012 R2
Windows 10	Windows Server 2016

Our printer drivers are certified and signed by Microsoft. They ensure optimum stability on your Windows operating system. The drivers are included in in the scope of delivery.

\*) Microsoft is a registered trademark of the Microsoft Corporation.





## Stand-alone operation

### Printing without PC

Stand-alone operation is the ability to print labels even if the printer is not connected to the host system.

The label layout is designed with the label software cablabel S3 or direct programming via PC.

Label formats, fonts, font-, text- and graphics data as well as data base contents are saved on the USB stick or read on the internal data memory IFFS.

Only variable data to be printed is sent to the printer via keyboard or scanner.



## Easy maintenance

### Printhead 203 / 300 / 600 dpi





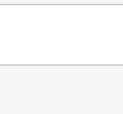

The printhead can be exchanged and adjusted easily using the Allen key, which is ready to hand at the machine.



### Removing the print roller

The print roller can be easily removed for cleaning or replacement.

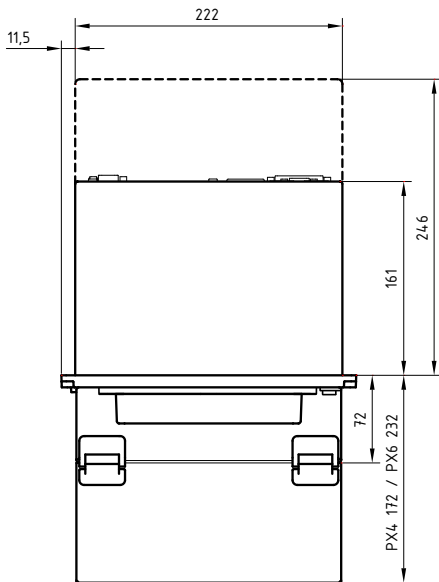
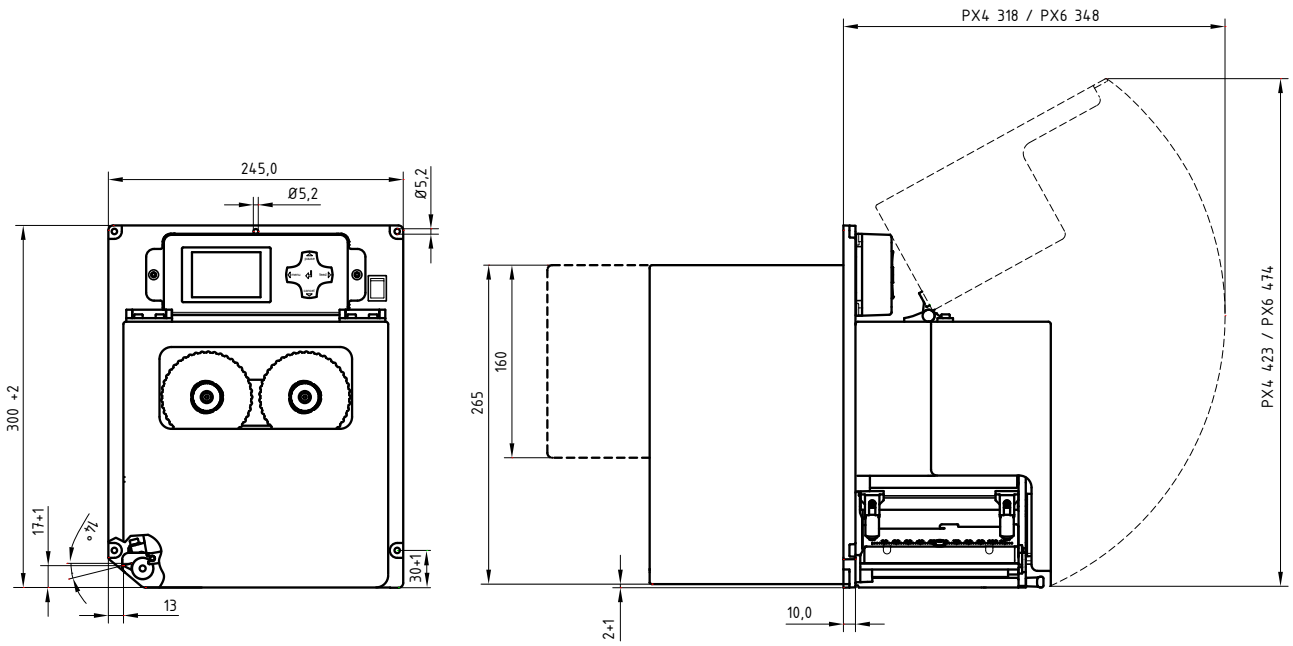
# Delivery program for the PX print module

	Part no.	Hardware	dpi
1.1		<b>5956102.xxx</b>	Print module PX4L / 200
		<b>5956103.xxx</b>	Print module PX4L / 300
		<b>5956106.xxx</b>	Print module PX4L / 600
		<b>5956142.xxx</b>	Print module PX4.3L / 200
		<b>5956143.xxx</b>	Print module PX4.3L / 300
1.2		<b>5956112.xxx</b>	Print module PX4R / 200
		<b>5956113.xxx</b>	Print module PX4R / 300
		<b>5956116.xxx</b>	Print module PX4R / 600
		<b>5956152.xxx</b>	Print module PX4.3R / 200
		<b>5956153.xxx</b>	Print module PX4.3R / 300
	<b>5956235.xxx</b>	Print module PX6L / 200	
	<b>5956123.xxx</b>	Print module PX6L / 300	
	<b>5956236.xxx</b>	Print module PX6R / 200	
	<b>5956133.xxx</b>	Print module PX6R / 300	
Part no.		Hardware optionen	
	<b>595.xxx.201</b>	Digital I/O interface	
	<b>595.xxx.202</b>	Digital I/O interface Ribbon saver	
	<b>595.xxx.203</b>	OEM – Digital I/O interface	
	<b>595.xxx.204</b>	OEM – Digital I/O interface Ribbon saver	
Scope of delivery			
<b>DVD:</b>	PX print module as label printer, Power cable type E+F, length 1.8 m, Connecting cables USB, length 1.8 m Operating manual de/en		
	Operating manual de/en/fr, Configuration manual de/en/fr, Service manual de/en, Spare parts list de/en, Programming manual en, Windows printer driver 32/64 bit in 19 languages for Windows Vista   Server 2008 Windows 7       Server 2008 R2 Windows 8       Server 2012 Windows 8.1     Server 2012 R2 Windows 10      Server 2016 Label software cablabel® S3 Lite and Viewer Database Connector en (without license)		
Part no.		Consumables	
	<b>5956381.001</b>	Printhead 4 / 203	
	<b>5956382.001</b>	Printhead 4 / 300	
	<b>5956383.001</b>	Printhead 4 / 600	
	<b>5956385.001</b>	Printhead 4.3 / 200	
	<b>5956384.001</b>	Printhead 4.3 / 300	
	<b>5954217.001</b>	Printhead 6 / 200	
	<b>5956322.001</b>	Printhead 6 / 300	
	<b>5954180.001</b>	Print roller DR4	
	<b>5954245.001</b>	Print roller DR6	

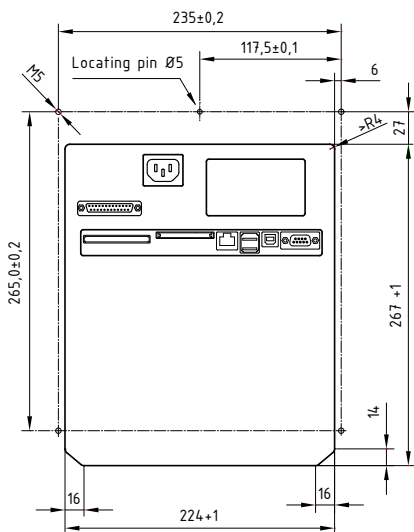
	Part no.	Accessories	
2.1		<b>5954380</b>	External operation panel
2.2		<b>5965040</b>	Interface cover
2.3		<b>5917651</b>	Interface connector 25-pin SUB D with screw clamps for cable connection
2.4		<b>5917652</b>	Interface connector 15-pin SUB D with screw clamps for cable connection
2.5		<b>5561043</b>	CompactFlash Type I memory card
2.6		<b>5901626</b>	Compact keyboard USB Cherry G84-4100
2.7		<b>5972523</b>	Cover magnet
Part no.		Interfaces	
3.1		<b>5954200</b>	Centronics interface
3.2		<b>5954201</b>	RS422 / RS485 interface
3.3		<b>5948205</b>	Label selection box – I/O box
Part no.		Connecting cables	
4.1		<b>5550818</b>	Connecting cable RS232 C 9/9 pin, length 3 m
4.2		<b>5918008</b>	Patch cable KAT 5e, 3 m gray
Part no.		Software	
11.9		<b>5588000</b>	Label software cablabel® S3 Lite
		<b>5588001</b>	cablabel® S3 Pro 1 WS
		<b>5588100</b>	cablabel® S3 Pro 5 WS
		<b>5588101</b>	cablabel® S3 Pro 10 WS
		<b>5588150</b>	cablabel® S3 Pro 1 additional licence
		<b>5588151</b>	cablabel® S3 Pro 4 additional licences
	<b>5588152</b>	cablabel® S3 Pro 9 additional licences	
	<b>5588002</b>	cablabel® S3 Print 1 WS	
	<b>5588105</b>	cablabel® S3 Print 5 WS	
	<b>5588106</b>	cablabel® S3 Print 10 WS	
	<b>5588155</b>	cablabel® S3 Print 1 additional licence	
	<b>5588156</b>	cablabel® S3 Print 4 additional licences	
	<b>5588157</b>	cablabel® S3 Print 9 additional licences	
		In preparation	cablabel® S3 Print Server
11.10	<b>9008486</b>	Programming manual english, printed copy	

All information on scopes of delivery, design and technical specifications correspond to the date of the printing. Subject to change. The data provided in the catalog do not represent any warranty or guarantee. For current data see website [www.cab.de/en/px](http://www.cab.de/en/px)

# Dimensions



Weight of print module	PX4	PX4.3	PX6
in kg	11,5	11,5	12



# Product overview

**Label printers MACH1, MACH2**  
in the lower price segment



**Label printers MACH 4S**  
where little space is available



**Label printers EOS2**  
Desktop device for label rolls  
up to diameter 152 mm



**Label printers EOS5**  
Desktop device for label rolls  
up to diameter 203 mm



**Label printers SQUIX 2**  
Industrial device for print widths  
up to 57 mm



**Label printers SQUIX 4**  
Industrial device for print widths  
up to 108 mm



**Label printers SQUIX 6**  
Industrial device for print widths  
up to 168 mm



**Label printers A8+**  
Industrial device for print widths  
up to 216 mm



**Label printers XD4T**  
for double-sided printing



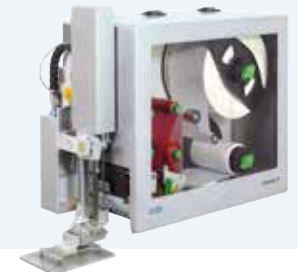
**Label printers XC**  
for two-color printing



**Print and apply systems Hermes+**  
for automation



**Print and apply systems Hermes C**  
for two-color printing and applying



**Print modules PX**  
to be integrated in labeling machines



**Labels**  
made from more than 400 materials



**Ribbons**  
in wax, resin and resin/wax qualities



**Label software cablabel S3**  
Design, print, control



**Label dispensers HS, VS**  
for horizontal or vertical dispense



**Labeling heads IXOR**  
to be integrated in labeling machines




**Marking lasers FL+**  
with output powers 10 to 50 Watt



**Laser marking systems XENO 1**  
for single workpieces and series



 Headquarters and fabrication in Germany

 to  International subsidiaries

There are further 820 distribution partners in more than 80 countries.



## Europe

### Germany

cab Produkttechnik GmbH & Co KG  
Wilhelm-Schickard-Str. 14  
76131 Karlsruhe  
phone +49 721 6626 0  
fax +49 721 6626 129  
[info@cab.de](mailto:info@cab.de)  
[www.cab.de](http://www.cab.de)

### France

cab Technologies S.à.r.l.  
2a Rue de la Moder  
Z.A. Nord du Val de Moder  
67350 Niedermodern  
phone +33 388 722501  
fax +33 388 722502  
[info.fr@cab.de](mailto:info.fr@cab.de)  
[www.cab.de/fr](http://www.cab.de/fr)

## America

### USA

cab Technology, Inc.  
21 Alpha Road, Suite 200  
Chelmsford, MA 01824  
phone +1 978 250 8321  
fax +1 978 256 9564  
[info.us@cab.de](mailto:info.us@cab.de)  
[www.cab.de/us](http://www.cab.de/us)

### Latin America

Alejandro Balmaceda  
Hacienda Jurica Pte 1615  
Colonial de Valle  
32553 Juárez, Mexico  
phone +52 656 682 4301  
[a.balmaceda@cab.de](mailto:a.balmaceda@cab.de)  
[www.cab.de/es](http://www.cab.de/es)

## Asia

### Taiwan

cab Technology Co., Ltd.  
**希愛比科技股份有限公司**  
16F-1, No. 700, Jhong Jheng Rd  
Junghe, Taipei 23552  
phone +886 (02) 8227 3966  
fax +886 (02) 8227 3566  
[info.asia@cab.de](mailto:info.asia@cab.de)  
[www.cab.de/tw](http://www.cab.de/tw)

### China

cab (Shanghai) Trading Co., Ltd.  
**铠博(上海)贸易有限公司**  
A507, No. 268, Tong Xie Rd  
Shanghai 200335  
phone +86 (021) 6236 3161  
fax +86 (021) 6236 3162  
[info.cn@cab.de](mailto:info.cn@cab.de)  
[www.cab.de/cn](http://www.cab.de/cn)

cab (Shanghai) Trading Co., Ltd.  
**铠博(上海)贸易有限公司**  
Room 39, 10F, 8 Lin He Zhong Rd  
Tian He District, Guangzhou 510610  
phone +86 (020) 2831 7358  
[info.cn@cab.de](mailto:info.cn@cab.de)  
[www.cab.de/cn](http://www.cab.de/cn)

## Africa

### South Africa

cab Technology (Pty) Ltd.  
8 Fabriek Street  
Strijdom Park  
Randburg 2169  
phone +27 11 886 3580  
fax +27 11 789 3913  
[info.za@cab.de](mailto:info.za@cab.de)  
[www.cab.de/za](http://www.cab.de/za)